

# Forged Eye Nuts

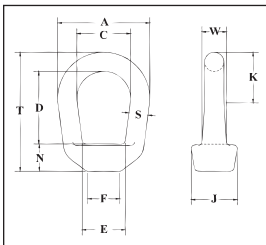


## G-400



- Forged Steel - Quenched and Tempered.
- Hot Dip galvanized.
- Tapped with standard UNC class 2 threads after galvanizing.
- Meets or exceeds all requirements of ASME B30.26 including identification, ductility, design factor, proof load and temperature requirements. Importantly, these products meet other critical performance requirements including fatigue life, impact properties and material traceability, not addressed by ASME B30.26.
- Also available in blank (as forged) item (S-4028) or on request with metric threading ( M-400).
- Recommended for In-Line pull.

## G-400 Eye Nuts



Size No.	"S" Stock Size (mm)	G-400 Stock No	Std. Tap Size (in.)	Working Load Limit (t)*	Weight Each (kg)	Dimensions (mm)										
						A	C	D	E	F	J	K	N	T	W	
1	6.35	1090438	1/4	.24	.04	31.8	19.1	25.4	19.1	12.7	17.5	16.0	11.7	43.7	7.85	
2	7.85	1090474	3/8	.57	.08	41.1	25.4	30.5	21.1	14.2	20.6	22.6	14.7	53	10.4	
3A	9.65	1090517	1/2	1.02	.13	51.0	31.8	36.6	27.4	20.6	25.4	27.7	15.7	63.5	12.7	
4	12.7	1090535	5/8	1.63	.27	63.5	38.1	48.8	34.3	25.4	33.3	33.3	17.5	82.5	17.5	
5	16	1090553	3/4	2.36	.45	76.0	44.5	60.5	40.4	28.4	38.1	39.9	22.4	98.8	21.3	
6	19.1	1090571	7/8	3.27	.75	89.0	51.0	66.8	49.8	35.1	47.8	45.0	23.9	110	25.4	
7	22.4	1090599	1	4.54	1.22	102	57.0	77.7	56.0	39.6	54.0	51.5	27.2	127	30.2	
8	25.4	1090633	1-1/4	7.03	1.98	114	63.5	88.9	62.5	47.8	60.5	57.5	31.8	147	35.1	
9	28.7	1090651	1-3/8	8.39	2.27	127	70.0	102	68.5	51.0	65.0	64.5	35.1	165	38.1	
10	31.8	1090679	1-1/2	10.21	3.08	143	79.0	109	78.5	57.0	76.0	71.5	38.1	179	42.2	
11	38.1	1090697	2	18.14	6.62	181	104	157	104	79.5	95.5	93.5	52.3	252	49.3	

\*Working Load Limit shown is for In-Line pull. Ultimate Load is 5 times the Working Load Limit. Rating based on standard tap size.

Rigging Accessories

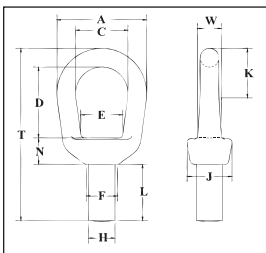


## S-405



- Forged Steel — Quenched and Tempered.
- On request: threaded to customer specification.

## S-405 Lifting Eyes



Size No.	S-405 Stock No.	Working Load Limit Threaded (t)*	Maximum Thread Diam. (mm)	Weight Each (kg)	Dimensions (mm)											
					A	C	D	E	F	H †	J	K	L	N	T	W
1	1090269	.39	7.85	.05	31.8	19.1	25.9	16.8	12.7	8.65	17.5	17.0	17.5	10.7	62.5	7.85
2	1090287	.57	9.65	.09	41.1	25.4	30.5	19.1	14.2	10.4	20.6	23.4	23.9	14.0	76	10.4
3	1090303	1.02	12.7	.23	51.0	31.8	36.6	25.4	20.6	13.5	28.7	28.7	31.8	17.3	93.5	12.7
4	1090321	1.63	16.0	.36	63.5	38.1	48.8	30.2	25.4	16.8	33.3	35.1	38.1	20.3	116	17.5
5	1090349	2.36	19.1	.57	76.0	44.5	58.0	35.1	28.4	19.8	38.1	42.2	44.5	24.9	140	21.3
6	1090367	3.27	22.4	1.02	89.0	51.0	63.5	41.4	35.1	23.1	47.8	48.5	47.8	26.9	156	25.4
7	1090385	4.54	25.4	1.47	102	57.0	74.0	47.8	39.6	26.2	54.0	55.0	52.5	30.5	179	30.2
8	1090401	5.67	28.7	2.13	114	63.5	85.0	49.3	47.8	29.5	60.5	62.5	63.5	35.6	207	35.1
10	1090410	8.16	38.1	4.23	143	79.0	97.0	70.0	57.0	38.9	76.0	75.5	81.5	42.9	252	42.2

\*Ultimate Load is 5 times the Working Load Limit. Rating based on UNC thread size shown in Max Thread Diameter column.  
† Dimension before machining (as forged)